

# PT 1,5/12-PH-5,0 CLIP

Order No.: 1755839



<http://eshop.phoenixcontact.de/phoenix/treeViewClick.do?UID=1755839>

Plug component, Nominal current: 10 A, Rated voltage (III/2): 400 V,  
Number of positions: 12, Pitch: 5 mm, Color: green, Metal surface: Sn

**Commercial data**

GTIN (EAN)	4046356335317
sales group	E402
Pack	50 pcs.
Customs tariff	85366990
Weight/Piece	0.013374 KG
Catalog page information	Page 187 (NTK-2010)

<http://www.download.phoenixcontact.com>  
Please note that the data given here has been taken from the online catalog. For comprehensive information and data, please refer to the user documentation. The General Terms and Conditions of Use apply to Internet downloads.

**Technical data****Dimensions / positions**

Pitch	5 mm
Dimension a	55 mm
Number of positions	12
Tightening torque, min	0.35 Nm
Tightening torque max	0.4 Nm

**Technical data**

Range of articles	PT 1,5/..-PH CLIP
Insulating material group	I

Rated surge voltage (III/3)	4 kV
Rated surge voltage (III/2)	4 kV
Rated surge voltage (II/2)	4 kV
Rated voltage (III/2)	400 V
Rated voltage (II/2)	630 V
Connection in acc. with standard	EN-VDE
Nominal current $I_N$	10 A
Nominal voltage $U_N$	250 V
Nominal cross section	1.5 mm <sup>2</sup>
Maximum load current	10 A
Insulating material	PA
Inflammability class acc. to UL 94	V0
Stripping length	6 mm
Nominal voltage, UL/CUL Use Group B	300 V
Nominal current, UL/CUL Use Group B	5 A
Nominal voltage, UL/CUL Use Group D	300 V
Nominal current, UL/CUL Use Group D	5 A

**Connection data**

Conductor cross section solid min.	0.2 mm <sup>2</sup>
Conductor cross section solid max.	1.5 mm <sup>2</sup>
Conductor cross section stranded min.	0.2 mm <sup>2</sup>
Conductor cross section stranded max.	1.5 mm <sup>2</sup>
Conductor cross section stranded, with ferrule without plastic sleeve min.	0.25 mm <sup>2</sup>
Conductor cross section stranded, with ferrule without plastic sleeve max.	1 mm <sup>2</sup>
Conductor cross section stranded, with ferrule with plastic sleeve min.	0.25 mm <sup>2</sup>
Conductor cross section stranded, with ferrule with plastic sleeve max.	1 mm <sup>2</sup>
Conductor cross section AWG/kcmil min.	26
Conductor cross section AWG/kcmil max	14
Minimum AWG according to UL/CUL	28
Maximum AWG according to UL/CUL	14

## Certificates / Approvals



Certification CUL, UL

### CUL

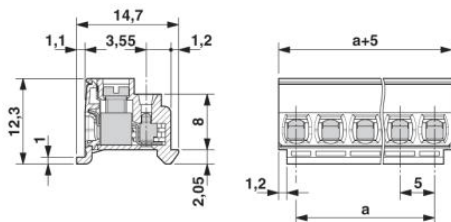
Nominal voltage $U_N$	300 V
Nominal current $I_N$	5 A
AWG/kcmil	28-14

### UL

Nominal voltage $U_N$	300 V
Nominal current $I_N$	5 A
AWG/kcmil	28-14

## Diagrams/Drawings

Dimensioned drawing



**Address**

PHOENIX CONTACT Inc., USA  
586 Fulling Mill Road  
Middletown, PA 17057, USA  
Phone (800) 888-7388  
Fax (717) 944-1625  
<http://www.phoenixcon.com>



© 2010 Phoenix Contact  
Technical modifications reserved;